

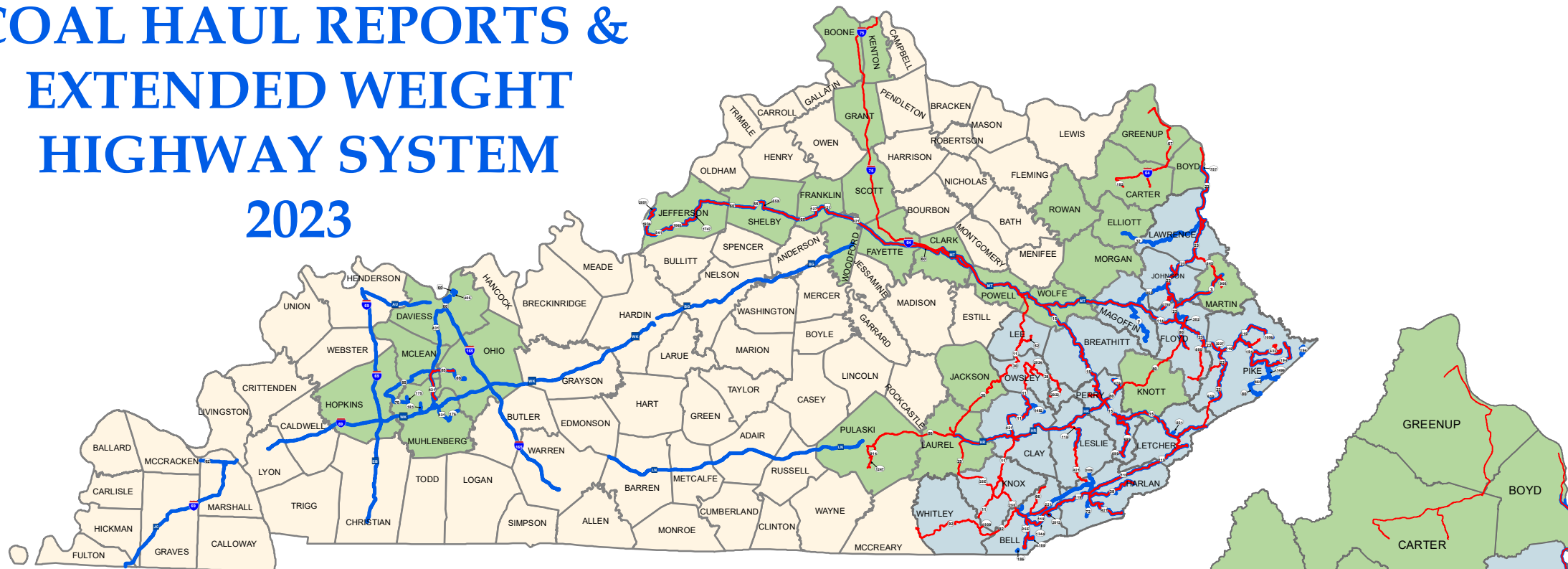
COAL HAUL REPORTS & EXTENDED WEIGHT HIGHWAY SYSTEM

2023



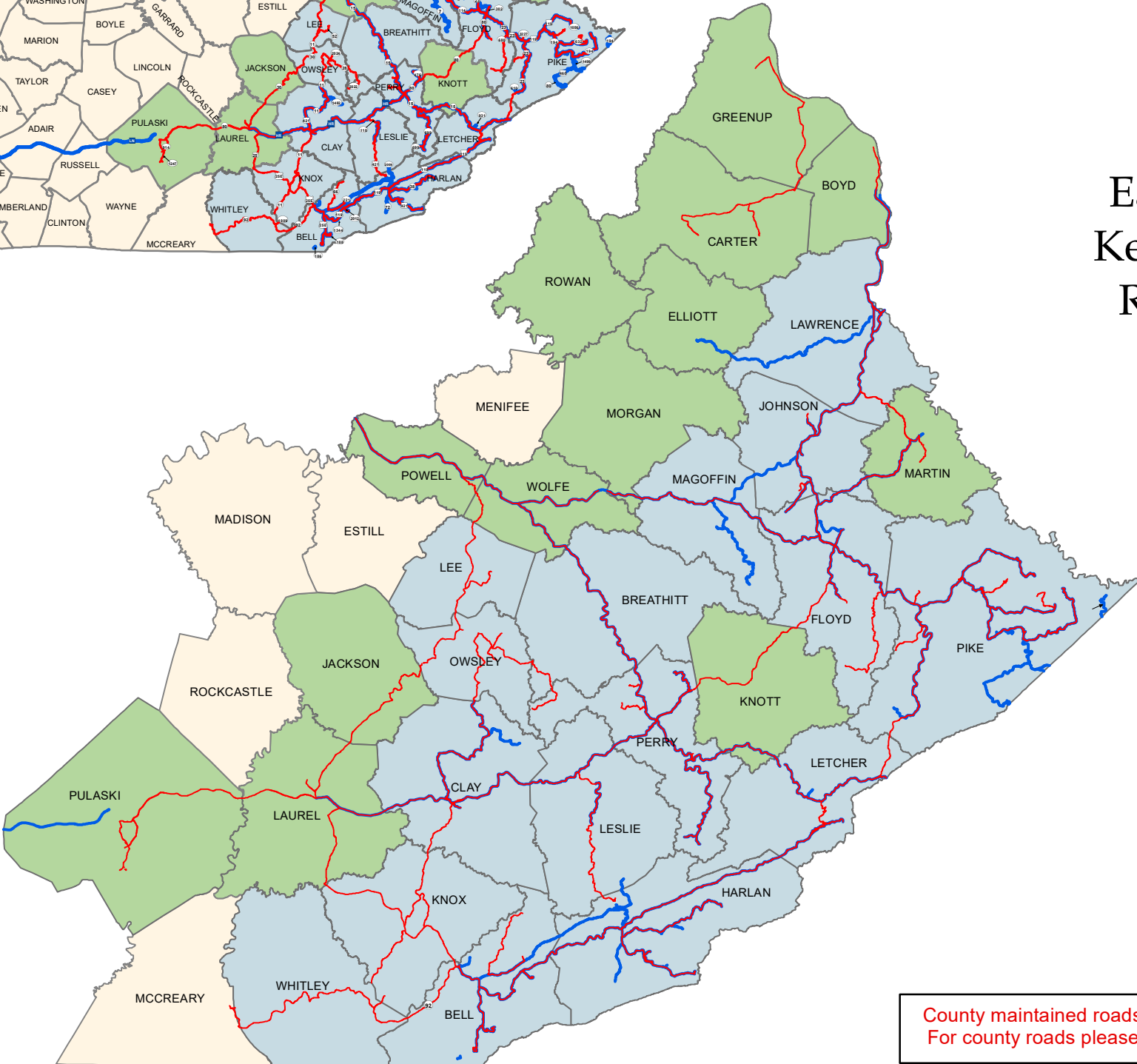
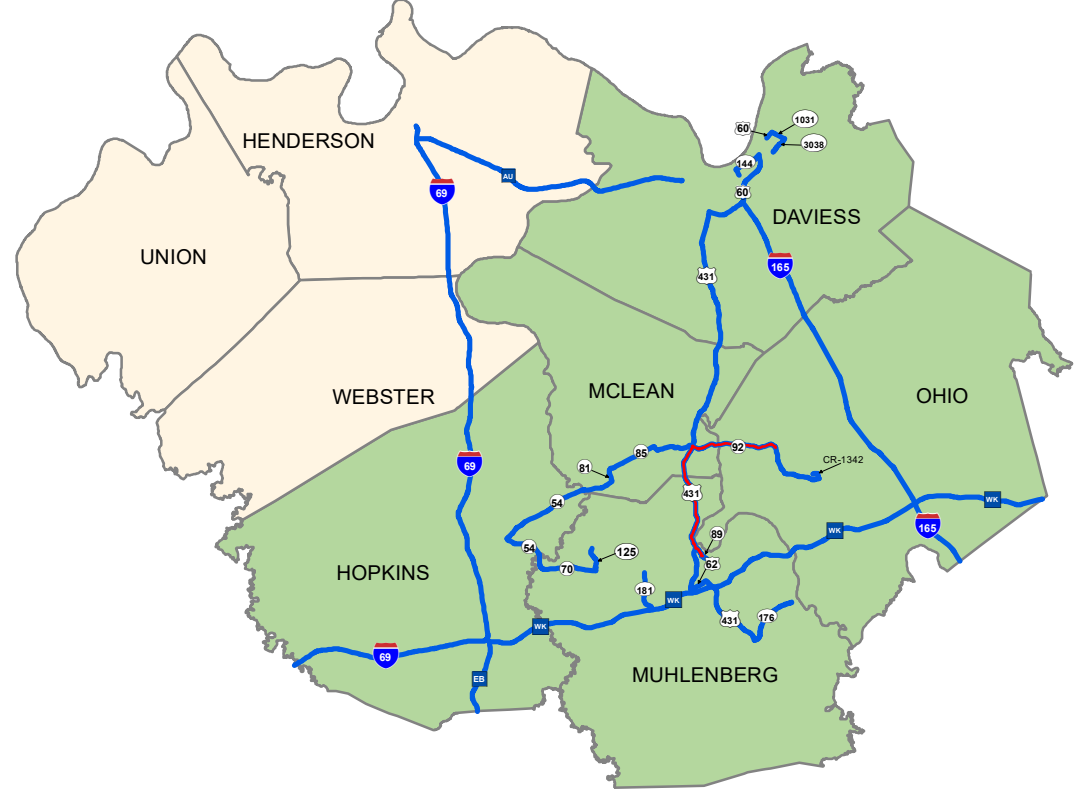
COAL STATUS

- PRODUCING
- IMPACTED
- NO ACTIVITY
- COAL HAUL REPORTED
- EXTENDED WEIGHT ROUTE
- AU AUDUBON PARKWAY
- MT BERT T. COMBS MOUNTAIN PARKWAY
- BG MARTHA LAYNE COLLINS BLUEGRASS PARKWAY
- EB EDWARD T. BREATHITT PENNYRILE PARKWAY
- HR HAL ROGERS PARKWAY
- WK WENDELL H. FORD WESTERN KENTUCKY PARKWAY
- JC JULIAN M. CARROLL PARKWAY



Eastern Kentucky Region

Western Kentucky Region



County maintained roads are not shown. For county roads please see the county

Structure Limits
 A route designated as Extended Weight (EW) may have structures that limit the allowable tonnage. Refer to the system listing which is available from the KYTC Division of Maintenance at 502-564-4556 or at http://apps.transportation.ky.gov/His_EWBridge/

Need to Fill a Gap in the Extended Weight System?
 Alternate routes not shown on the Extended Weight system may be arranged by contacting the appropriate KYTC District Office (<http://transportation.ky.gov/Pages/Highway-Districts.aspx>)